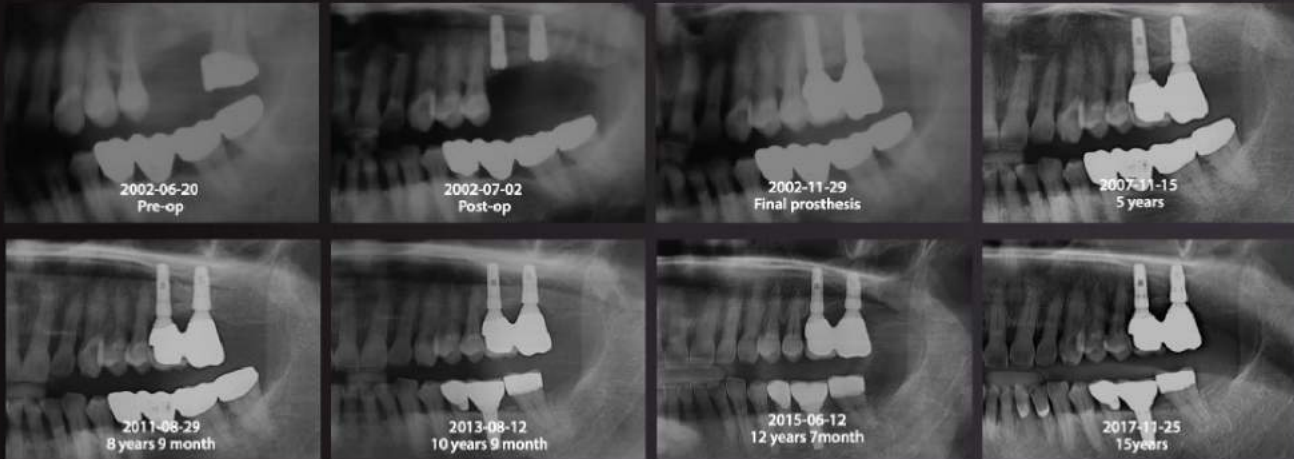


Dentium LONG-TERM CLINICAL CASE

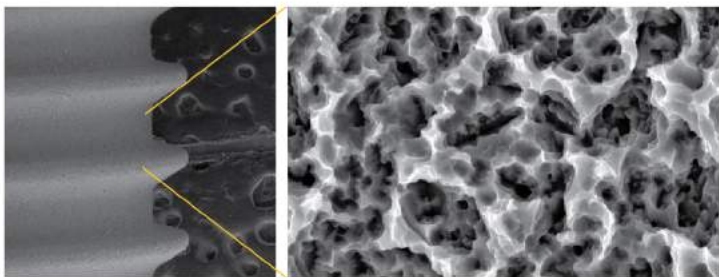
over 15 years of Long term data



Simple yet Predictable: 15 years of Clinical Evidence

15 years history of Consistent Implant Design with S.L.A.
(Sandblasting with Large grit and Acid etching) Surface

Excellent Bone-to-Implant Contact (BIC)



S.L.A. Surface Treatment



Reference: Myron Nevins, DDS, et al., "Clinical and Histologic Evaluations of SLA Dental Implants" *Int J Periodontics Restorative Dent* 2017;37:175-181. doi: 10.11607/prd.3131

Efficiency through Simplicity

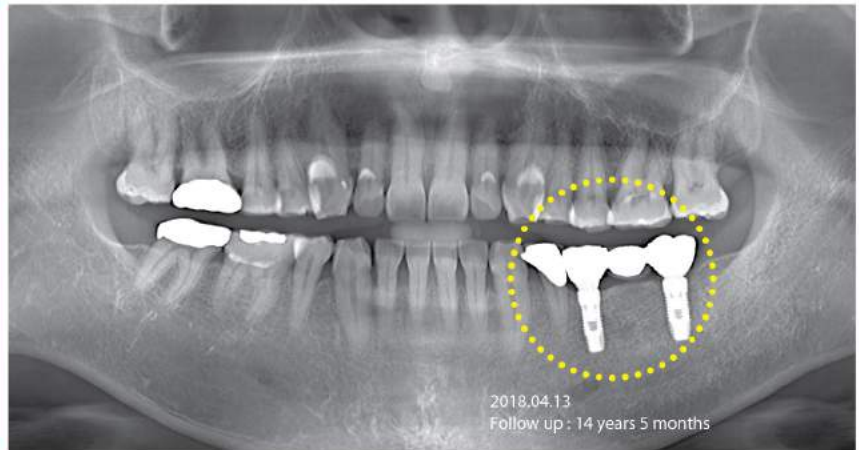
Single abutment connection is used for all implant diameters (implantium and SuperLine)
One abutment screw fits all abutments and fixture platform



DentiumUSA
Developed by Clinicians for Clinicians

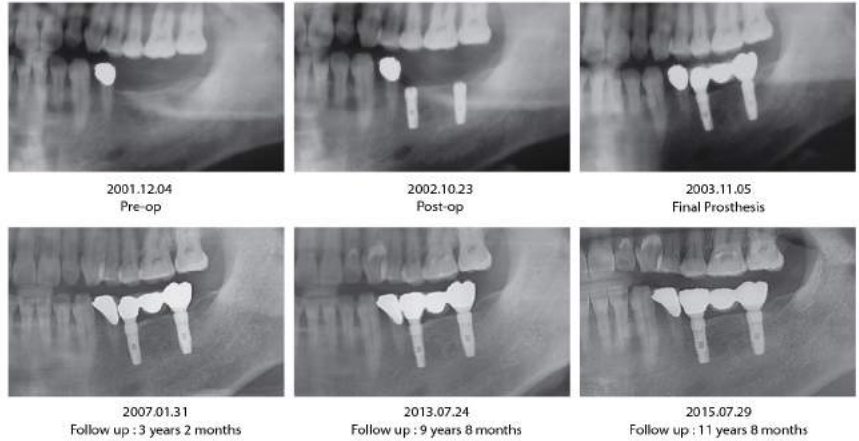
6731 Katella Ave. Cypress, CA 90630
Tel. 1-877-304-6752 Fax. 1-714-226-0019
cs@dentiumusa.com

over
15 years
of Long
term
data



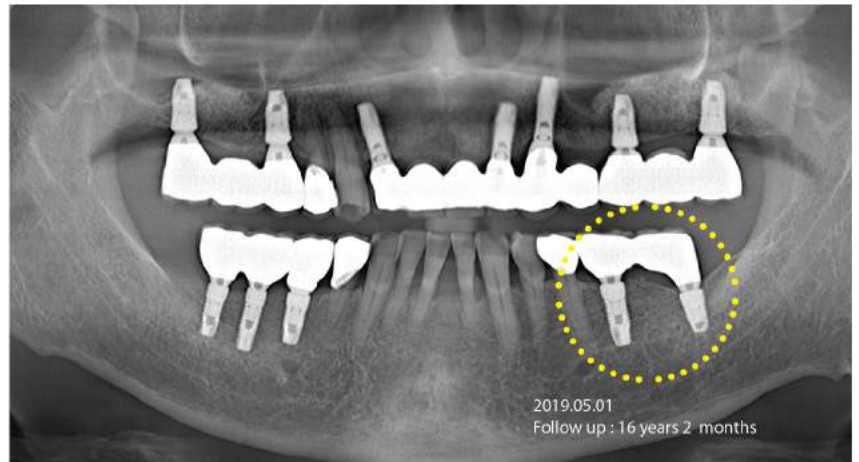
Case 1: 55yrs / Male

Implants placed: #35, #37
Fixture size: IMPLANTIUM 3812 / 4312
Date of initial surgery: 2001.12.04



Case 2: 74yrs / Male

Implants placed: #35, #37
Fixture size: IMPLANTIUM 4312 / 4308
Date of initial surgery: 2003.3.5



DentiumUSA
Developed by Clinicians for Clinicians

6731 Katella Ave. Cypress, CA 90630
Tel. 1-877-304-6752 Fax. 1-714-226-0019
cs@dentiumusa.com